

Core Concepts

The PATHWAYS approach incorporates **three core concepts** as a red thread throughout the work programme.

These include:

Sustainability trade-offs and synergies

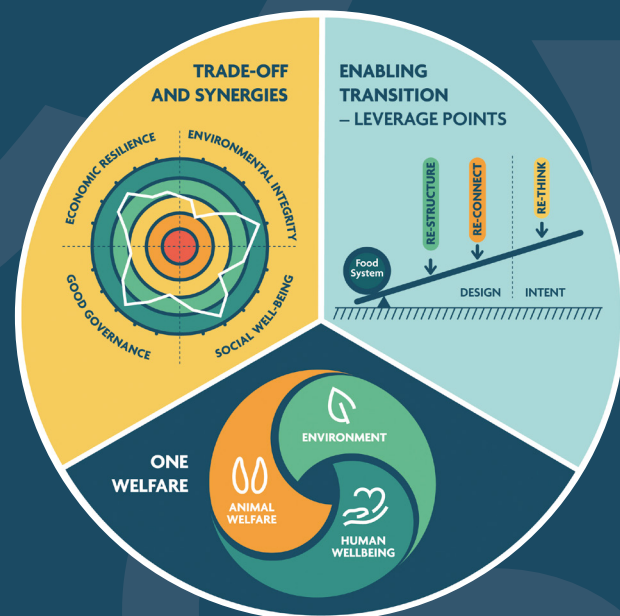
Explores interactions and trends between costs and indicators.

One welfare

The inextricable link between animal welfare and social and environmental wellbeing.

Enabling transition

Effecting change through deeper leverage points of design and intent.



Contacts

Project coordinators:

Laurence Smith | SLU
laurence.smith@slu.se

Harry Blokhuis | SLU
harry.blokhuis@slu.se

Communication:

Raphael Garcia | REVOLVE
media@pathways-project.com

Project partners



Supporting partners



This project has received funding from the European Union's Horizon 2020 Research and Innovation Programme under grant agreement No 101000395.

 **Pathways**
FOR SUSTAINABLE FOOD

www.pathways-project.com

 PATHWAYS  @pathways_europe

The PATHWAYS Approach

Aiming to reduce environmental impacts while addressing societal demands for safe, affordable, nutritious, welfare-friendly meat and dairy products, **PATHWAYS is identifying and increasing sustainable practices along the supply and production chains of the European livestock sector.**

Coordinated by the Swedish University of Agricultural Sciences (SLU) and comprising 29 partners from 12 countries, this 5-year (2021-2026), €9 million H2020 project contributes to the **EU Farm-to-Fork Strategy** which is at the heart of the **EU Green Deal**.

Robust science is key to informing policy, industry, and facilitating public debate on sustainable food systems; yet the lack of a holistic sustainability assessment makes it difficult to measure livestock's contributions to society.

PATHWAYS is developing a multi-dimensional assessment and holistic scenario evaluation to better understand livestock systems' contributions to indicators such as productivity, biodiversity, health and welfare, GHG emissions, and

ecosystem services - with the aim of improving the overall sustainability of livestock production systems.

Through its participatory approach to livestock system redesign, **PATHWAYS is co-developing visions, future scenarios, and transition pathways for sustainable livestock food systems** through farmer practice hubs and a European multi-actor (MA) platform.

The PATHWAYS practice hubs – covering dairy, pork, beef, poultry, and sheep and goat livestock sectors – **will share and test innovations in living labs** that employ a holistic sustainability assessment, while engaging a Community of Practice that will validate the project's findings on the road to sustainable livestock systems.



Towards Sustainable Food Systems

Food production accounts for one-third of global greenhouse gases (GHG) and nearly 70% of EU agricultural GHG emissions come from livestock farming.

With global demand for animal products projected to double, more intensified production is likely to put further strain on natural resources with greater detrimental impacts to the environment.