

Van den Pol-van Dasselaar, A.<sup>1</sup>, Smith, L.G.<sup>2,3</sup>, Oliveira, D.<sup>2</sup>, Blokhuis, H.J.<sup>2</sup>

<sup>1</sup>Aeres University of Applied Sciences (NL)

<sup>2</sup>Swedish University of Agricultural Sciences (SE)

<sup>3</sup>School of Agriculture, Policy and Development, University of Reading (UK)

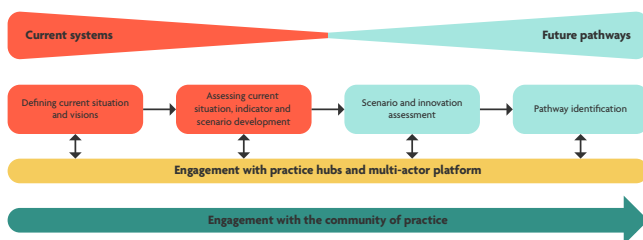


**Presented by:**  
Agnes van den Pol-van Dasselaar

## Abstract

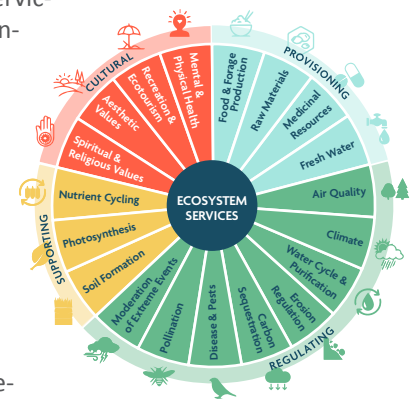
Grasslands play a key role in transitions to improved sustainability in ruminant production systems and are central to the PATHWAYS project. PATHWAYS will define and assess interactions between livestock production, the environment and land-use by incorporating technical and economic indicators into a framework that will enable a quantitative assessment of grassland ecosystem services. The indicators will be established through a co-innovative process involving stakeholders and with data gathered at grassland-related farmer practice hubs. Development pathways will be identified that meet multifaceted societal demands, both currently and in the future.

PATHWAYS will bring together researchers and industry, develop visions and holistic scenario evaluations based on new indicators and methods. This will inform the selection of pathways for sustainable development of livestock systems and foster the development of future innovations in policy, business and research through engagement with a community of practice.



## The role of grasslands in PATHWAYS

In ruminant production systems, grasslands play a key role in transitions to improved sustainability, providing many ecosystem services such as carbon sequestration and forage production and are essential for the economy, environment and people. The PATHWAYS framework to assess ecosystem services will, among others, enable a quantitative assessment of the value of ecosystem services that grasslands provide. Technical and economic indicators for grasslands will be measured by collecting data from practice hubs of farmers focused on grasslands used by livestock in Denmark, France, Italy, Romania, Spain, Sweden and the United Kingdom.

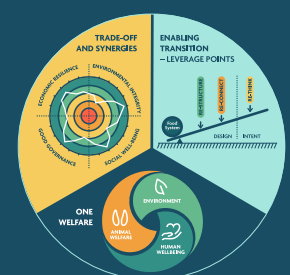


## Conclusions

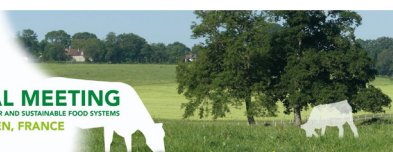
PATHWAYS' focus on ruminant production systems includes dairy, beef, sheep, pork, goats, and poultry, providing ample opportunities for the transfer and co-construction of innovations for improved sustainability, emphasising the key role of grasslands in these production systems.

## ABOUT PATHWAYS

With the aim of reducing environmental impacts while addressing societal demands for safe, nutritious and affordable meat and dairy products, PATHWAYS is about identifying and increasing sustainable practices along the supply and production chains of the European livestock sector. Coordinated by the Swedish University of Agricultural Sciences and comprising 29 partners from 12 countries, this 5-year (2021-2026) €9 million Horizon 2020 project contributes to the EU Farm-to-Fork Strategy, which is at the heart of the EU Green Deal.



**29th GENERAL MEETING**  
GRASSLAND AT THE HEART OF CIRCULAR AND SUSTAINABLE FOOD SYSTEMS  
JUNE 26-30, 2022 • CAEN, FRANCE



This project has received funding from the European Union's Horizon 2020 Research and Innovation Programme under grant agreement No 101000395.